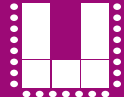










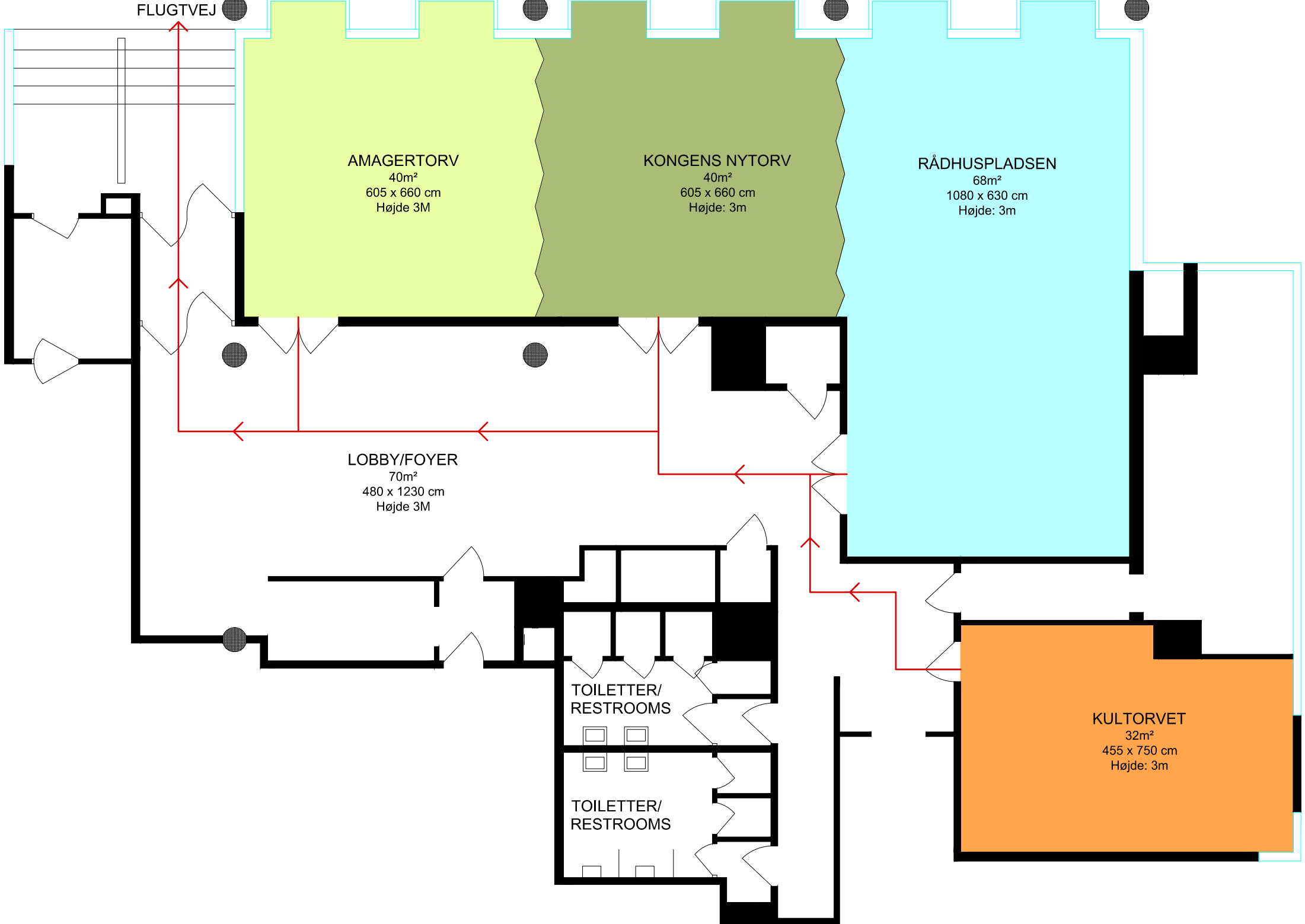
HOTEL  
**Imperial**  
COPENHAGEN  
ARP-HANSEN HOTEL GROUP



Lokalenavn	Længde	Bredde	Højde	m <sup>2</sup> /sq. ft.	U-bord 	Skolebord 	Biograf 	Langbord 	Cabaret 	Banquet 	Reception 
Rådhuspladsen	6,3	10,8	3,0	68/732	30	44	90	30	60	40	50
Kongens Nytorv	6,6	6,6	3,0	40/431	18	20	35	14	25	20	20
Amagertorv	6,6	6,6	3,0	40/431	18	20	35	14	25	20	20
Rådhuspladsen/ Kongens Nytorv	12,9	17,4	6,0	108/1162	48	60	120	34	80	-	65
Kongens Nytorv/ Amager Torv	13,2	13,2	6,0	80/861	34	50	100	30	60	60	90
Store Torv	18,9	6,0	3,0	148/1593	52	100	200	46	120	100	200
Kultorget	7,5	4,5	3,0	37/398	16	16	30	16	20	16	-
Gammeltorv	6	3,9	3	37/398	12	18	28	14	-	-	-
Axeltorv	6,0	3,9	3,0	27/291	-	-	-	10	-	-	-

Her er mulighed for skriveplader på alle stolene undtaget på Axeltorv

FLUGTVEJ



AMAGERTORV  
40m<sup>2</sup>  
605 x 660 cm  
Højde 3M

KONGENS NYTORV  
40m<sup>2</sup>  
605 x 660 cm  
Højde: 3m

RÅDHUSPLADSEN  
68m<sup>2</sup>  
1080 x 630 cm  
Højde: 3m

LOBBY/FOYER  
70m<sup>2</sup>  
480 x 1230 cm  
Højde 3M

TOILETTER/  
RESTROOMS

TOILETTER/  
RESTROOMS

KULTORVET  
32m<sup>2</sup>  
455 x 750 cm  
Højde: 3m